

Board walk

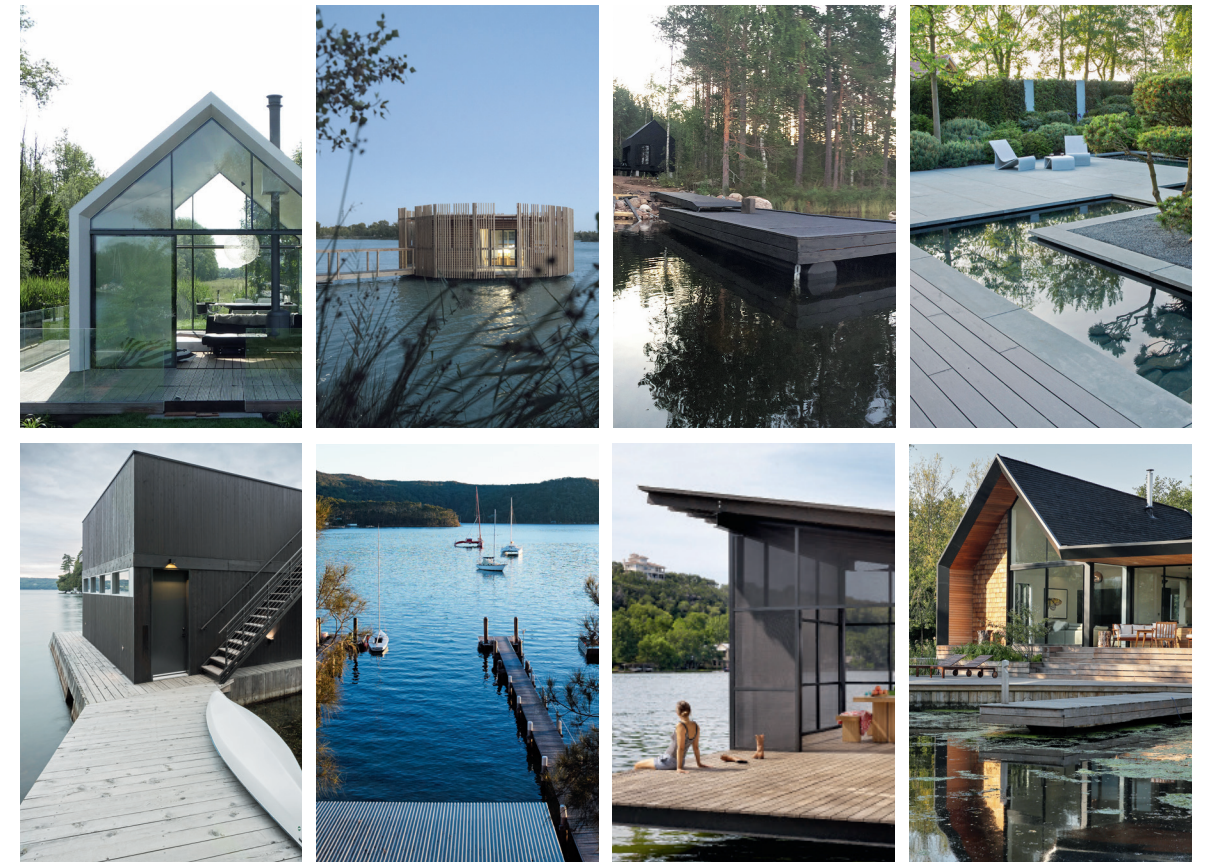
IDEAS FOR DECKING AND JETTIES

Nine solutions for walkways



Crawley Edge Boatshed owned by the Natrass family
 “The Crawley Edge Boatshed is thought to have been constructed in the late 1920s and was renovated in 2001, along with the jetty. In winter every year, after heavy rain, the water level of the Swan River rises above the jetty which gives the appearance that the boatshed is floating alone.”

“ACCENTING THE SEAMLESS FLOW BETWEEN THE HOUSE AND THE LAKE AND ALSO ENHANCING THE CONNECTION WITH NATURE”



Recreational Island House by zby4-architects
 “The boardwalk here acts as a spatial connector. On approach, it invites the visitor to walk alongside the house towards the main terrace. The side façade of the house can also be opened so that the terrace becomes an indoor deck from where you can access the water for an afternoon swim,” says architect Remko Remijnse.

The Slender House by MU Architecture
 “The jetty forms a land link to the boathouse. The material used for the cladding of this floating cube and its distinctive shape creates a strong relation with the main house. The black tinted wood brings a powerful and timeless sense of calm,” explains Charles Côté, principal architect on this project.

GCP Wood Cabins Eco Hotel by Atelier LAVIT
 “The floating wooden walkway is made of larch and its structure acts as an anchoring system for the cabin. The jetty is the first experience that guests will get before entering the cabin and they go from a stable terrain to something more oscillating that introduces the sensory experience of sleeping on the water,” says Marco Lavit.

Scotland Island House by Clayton Orszaczký and landscape design by William Dangar and Associates
 “The jetty is the point of arrival at this house that is only accessible by boat. It forms both the edge and the centre of the home and is where the owners interact with life by the water. It has a simple structure of robust timber,” says Michelle Orszaczký.

Mokki Santara Jetty by DOM Stay & Live
 “Designed by architect Carla Gertz, the timber construction painted in black blends in with the house and lake. At night and in the long winter both structures disappear, accenting the seamless flow between the house and the lake and also enhancing the connection with nature,” says interior architect and founder Marta Nowicka.

Hog Pen Creek Residence by Lake|Flato Architects
 “The boardwalk is a principal element of the house, offering a glimpse of the lake from the home’s main entrance. The long walk connects a series of structures that stair-step down the hillside, crossing a 75-foot lap pool, terminating at a screened pavilion by the water’s edge.”

Trekker composite decking planks by Hawwoods
 “This decking is formed of recycled wood and plastics. The relationship between the building and decking is now a seamless transition as the entertaining spaces inside the home have been extended to the outdoors,” says Roger Hemmings, senior marketing project development manager.

Backwater detached house by Platform 5 Architects
 “The jetty projects from the lower deck and has a row of steel piles supporting it along the centre line so it looks as if it’s floating above the water. It extends the built landscape into the lagoon providing a focal point in the view from the central kitchen and dining space inside the house,” explains Patrick Michell.

Photos: Adrian Pelliccia; Elena Natrass; Stéphane Groleau; Prue Ruscoe; Jena Garay; Alan Williams; Photography